

PLATS MILL TOWER 3-D SCANNING AND BUILDING INFORMATION MODEL

NESTLÉ PURINA PETCARE COMPANY, FAIRBURN, GA

PROJECT DESCRIPTION

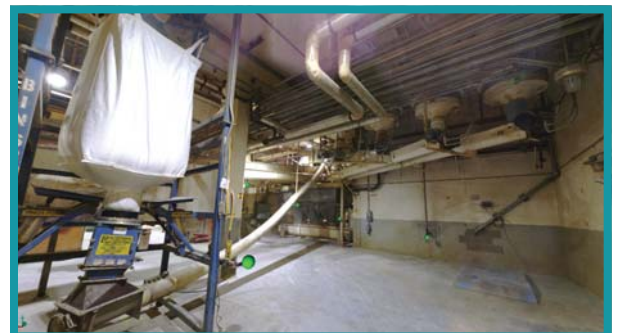
As part of its Fairburn, Georgia plant, Nestlé Purina Petcare Company (NPPC) owns an existing, six-story, IIG-rated storage silo/building. NPPC needed to obtain 3-D maps of existing conditions, from which could be developed a 3-D model and drawings of the IIG floors. These deliverables would allow NPPC to a) evaluate the feasibility of future engineering design; b) understand current equipment layout to ensure proper equipment compatibility during upgrades or maintenance.

Using state-of-the-art Faro Focus 3-D laser scanners, Prime performed a comprehensive 3-D scan, accommodating NPPC's demanding operations schedule. After scanning each floor of the building, Prime used the data to generate a 3-D model of the entire building.

A critical challenge involved performing all work on an accelerated schedule to minimize plant downtime. For reasons of safety and precision, the scan could be performed only when the plant was shut down and thus unable to earn revenue. It was essential that all data be gathered in one session to avoid subsequent shutdowns. Prime's expert surveyors and technicians gathered and delivered all data in a single phase, ensuring the plant remained profitable.

Detailed Engineering Scope Elements:

- 3-D Scan
- 3-D Model
- 2-D Facility Drawings



3-D SCANS OF BUILDING INFRASTRUCTURE